

# Malvern Borough

# The Borough Broadcaster

Winter Newsletter

Winter 2023



### Malvern Borough

1 E First Avenue  
Suite 3  
Malvern PA 19355

Phone: 610-644-2602  
Fax: 610-644-4504  
malvern@malvern.org

### Inside this issue:

Malvern Borough Happenings	1
Borough Council	2-3
Malvern Police Dept.	4
Malvern Fire Dept.	5
Borough Admin and Codes Enforcement	6
Shade Tree Commission	7
Environmental Advisory Council	8
Parks and Recreation	9
Paoli Battlefield and Upper Main Line Memorial Associations	10
Historical Commission and Grant Funding	11
Malvern Business Professional Association	12
Borough Happenings and Events	13

## Malvern Borough Happenings

### Quann Park Rededication

A ribbon-cutting ceremony was held on December 9, 2022, to rededicate Horace J. Quann Park in Malvern after a 6-month renovation project financed by grants, including funds from Chester County and PA Department of Conservation and Natural Resources. The park, described by Chester County Commissioners as a treasured gem for the community, has an updated basketball court, baseball field, sidewalk, fencing, and trees. Andrew Gilchrist with DCNR stated, “The pandemic showed everyone how valuable open space is to a community”. The Malvern Environmental Advisory Council added a Rain Garden to the park as well to help with stormwater runoff. Malvern Borough Council thanked all who worked on making this project a reality along with support from Senator Carolyn Comitta, State Representative Kristine Howard, Chester County Commissioners, Marian Moskowitz, Josh Maxwell, and Michelle Kichline. Horace Quann, the park’s namesake, was a longtime Malvern business owner.



Pictured L-R behind ribbon: (front) Commissioner Michelle Kichline, Council President Amy Finkbiner, Commissioner Josh Maxwell, Mayor Zeyn Uzman, and Commissioner Marian Moskowitz (back) Andrew Gilchrist, DCNR, Chief of Staff Michael Hartman



# Malvern Borough Council

## First Avenue Bike Trail

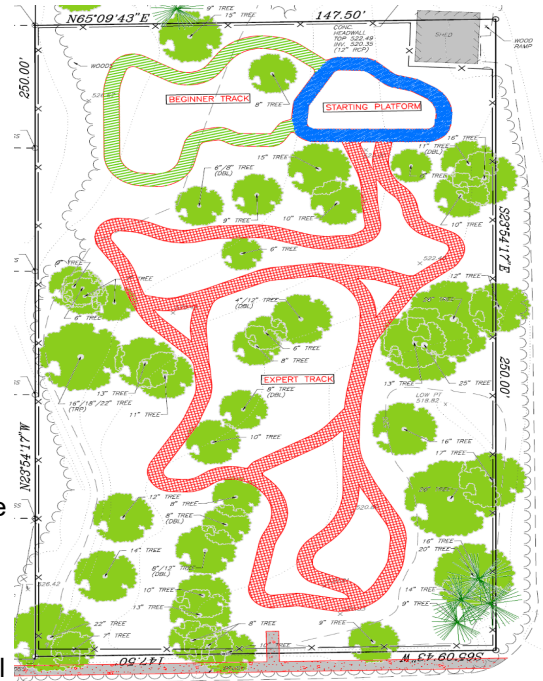
Malvern Borough is planning a Bike Trail Park on an 0.8-acre parcel inside the bend of the Malvern Fire Company access drive. This project will provide a safe biking area for Malvern’s youth, while preserving the tree canopy and enhancing native habitat.

Mountain biking is an increasingly popular sport, especially among local middle and high school students. The trails will incorporate bumps and curves to encourage physical activity. A [preliminary design](#) provides 1,114 feet (0.21 miles) of trails, including an expert area (800 feet), beginner area (190 feet), and starting loop (124 feet). The final design will be completed by the Borough Engineer in consultation with a professional bike park builder and an arborist / urban forester.

The ecology of the parcel will be improved by removing debris and invasive understorey, while planting native species to buffer the neighboring properties and the areas between the bike trails. Trees will only be removed if they present a safety issue.

The site will be fenced and follow standard operating hours, dawn to dusk. Access will be via a new sidewalk that is already planned as part of a new entrance to the Randolph Woods Nature Preserve. A signal light warning system, operated by the Malvern Fire Company, is proposed to ensure pedestrian safety along the access drive.

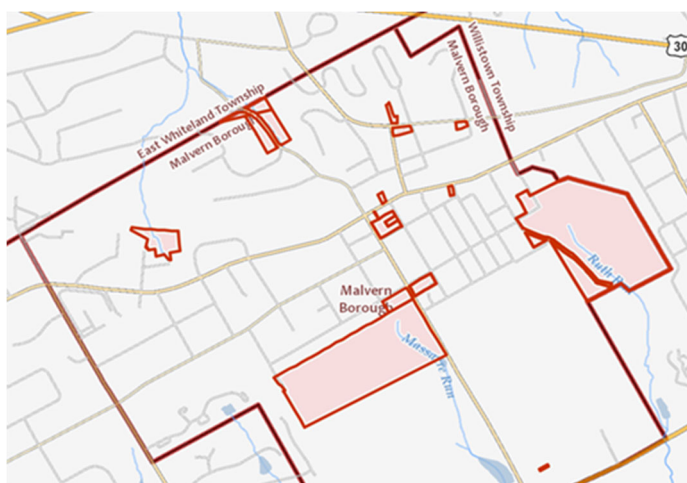
This project is supported by a \$91,677 grant from Chester County, awarded in 2021. It was originally proposed in 2020 as a “pump track,” and Borough Council now proposes to revise the plan to maintain the tree canopy and provide a more natural setting for riders. The terms of the grant permanently protect the parcel as open space for active recreation.



## Open Space and Recreation in Malvern Borough

The [2022 Comprehensive Plan](#) notes that Malvern Borough has almost 17% of its total land area in open space uses, which is highest amongst Chester County’s fifteen boroughs and comparable to many more rural communities.

Nonetheless, the Borough is only 1.3 square miles, and available space for new active recreation projects is limited. Our largest areas are preserved for conservation and passive recreation. The map and table below provide a complete inventory of Borough-owned property. Note that the Borough does not own the 22-acre Paoli Memorial Grounds.



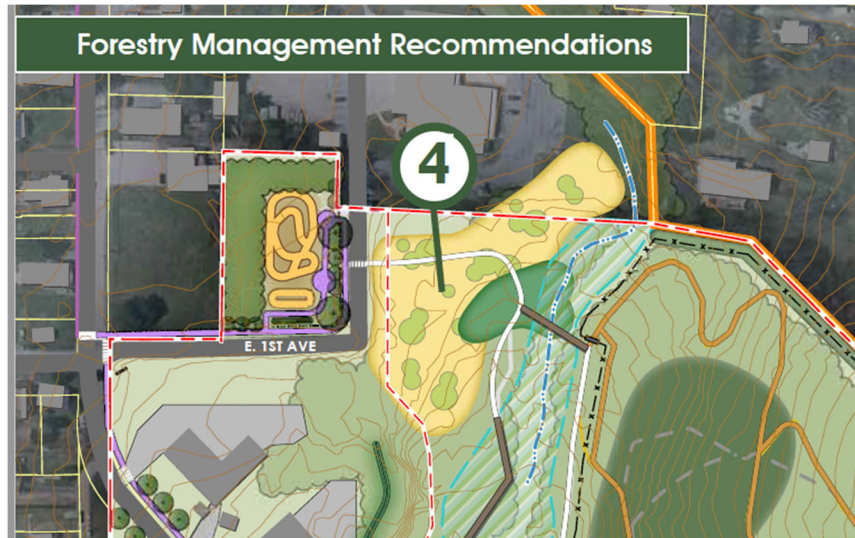
Site	Acres	Contents
Paoli Battlefield	40.0	Historic site
Randolph Woods	38.2	Nature preserve easement
N Warren Ave	5.3	Very steep slopes, stream
<b>*Public Works Area</b>	<b>4.8</b>	<b>Municipal uses, Comcast</b>
110 Crestside Way	3.5	Pump station, steep slopes
<b>*Burke Park</b>	<b>1.7</b>	<b>Community park</b>
<b>*Quann Park</b>	<b>1.4</b>	<b>Basketball, softball</b>
Borough Hall	1.1	Municipal building
<b>*Herzak Park</b>	<b>0.4</b>	<b>Basketball court</b>
209 Old Lincoln Hwy	0.4	Very steep slopes
<b>*Rubino Park</b>	<b>0.3</b>	<b>Playground</b>
King St Lot	0.2	Parking lot
Church St Lot	0.2	Parking lot
Paoli Pk/S Warren Av	0.1	Small landlocked parcel

**The Borough owns nearly 100 acres of property, much of which is preserved open space. Sites suitable for active recreation are shown with an asterisk.**

# Malvern Borough Council

## First Avenue Bike Trail, Continued

The Borough has considered other locations for the bike park, including the field to the east of the Malvern Fire Company access drive, referred to by some as “Option B.” This location is part of the Randolph Woods Nature Preserve easement area because it slopes directly downward to Ruth’s Run, an important headwater of the Crum Creek. The [2020 Randolph Woods Master Plan](#) identified this field as part of the Water Resource Protection Area and recommended that the lawn be converted to meadow. It is not a suitable location for a bike park.



***The Randolph Woods Master Plan recommends biking in the isolated parcel west of the access drive, and meadow plantings in the Water Resource Protection Area to the east.***

# Malvern Borough Council

Your Local Elected Official Are Only An Email Away!

**Borough Council looks forward to hearing from you by email and in person at meetings of the Borough Council.**

**Contact your elected Borough Council officials and the Mayor by email:**

Amy Finkbiner, PhD	President	afinkbiner@malvern.org
Joe Bones	Vice President	jbones@malvern.org
Lynne D. Frederick	Member	lfredrick@malvern.org
Marty Laney	Member	mlaney@malvern.org
Mark Niemiec	Member	mniemiec@malvern.org
Brendan Phillips	Member	bphillips@malvern.org
Angela Riccetti	Member	ariccetti@malvern.org
Zeyn Uzman	Mayor	zuzman@malvern.org



# Malvern Police Department

## WHATS HAPPENING IN MALVERN BOROUGH POLICE DEPARTMENT?

Malvern Borough Officers have been busy this season! As previously mentioned in the Fall Newsletter, our officers participated in the Blue Beards for Charity fundraiser. Malvern Borough was one of twenty-four agencies involved in the fundraising. With the help of local residents our department raised over \$6600.00 for Blue Beards. We are one of the smaller departments involved in this charity. Once again, we couldn't do this without the support of our wonderful residents. We hope to have the support again next year, Thank you!

Since this is the season of giving, our Chief and members of the department wanted to give back to the community. We anonymously heard about a local family who was having a difficult time. Together with our Mayor, we were able to provide Christmas for the family and hopefully eased the burden the holidays can bring. We will look to help another family next Holiday season.

In October our officers held our first Coffee with a Cop event at Whitford at Malvern Flowers on West King Street. We enjoyed meeting with everyone and look forward to having more events soon. Please watch our Facebook and Instagram pages for future dates.



Now that winter has arrived, we would like to offer a few safety tips. If you plan on traveling make sure your vehicle is equipped with a few essentials:

- Snow shovel
- Broom and ice scraper
- Abrasive material (sand or kitty litter), in case your vehicle gets stuck in snow
- Jumper cables
- Flashlight
- Warning devices (flares and emergency markers)
- Blankets for protection from cold
- Cell phone charger, water food and any necessary medicine



Most importantly, if you do not have to travel in bad weather, **DON'T! Stay home!**

The Malvern Police Department wishes to thank all of the residents and local business owners for their constant support to our department. Over the Holiday Season, we received many visitors who took time out of their busy lives and provided lunches, treats, candies, cookies, snacks and donations for our officers. We greatly appreciate the kindness and thoughtfulness you all have extended not just at the holidays, but throughout the year as well.

We are proud to serve the community whom we swore to protect and hope you will call us if the need arises. For emergencies, call 911 and for non-emergencies call 610.647.1440. Follow us on our [Facebook](#) and [Instagram](#) pages.

# Malvern Fire Company

## Malvern Fire Company Summary of Operations

The Malvern Fire Company has three divisions which encompass the overall operations of the fire company. The Malvern Fire Company provides Fire and EMS coverage (Basic Life Support and Advanced Life Support) to Malvern Borough, and portions of Willistown Township, East Goshen Township, and East Whiteland Township. Staffing for these services is provided by dedicated career and volunteer members of the fire company. The divisions have various officers that ensure the delivery of service for these.

### Fire Division

The Fire Chief is the overall lead of the fire division that provides fire, rescue and fire police services to the citizens of Malvern and surrounding areas. This division operates an Engine, Ladder, Tanker, and two support vehicles. The current officers of the fire division are:

Fire Chief: Jim Rapp  
Deputy Chief: D. Matt Miles  
Assistant Chief: Kyle Vaughn  
Assistant Chief: Gerald Vaughn  
Captain: Joseph Fitzgerald  
Captain: Martin McKenzie  
Lieutenant: Larry Crisp  
Fire Police Captain: Mark Johnson  
Fire Police Lieutenant: Jack Chapman

### EMS Division

The Director of EMS Operations is the overall lead of the EMS division that provides Basic Life Support (BLS) and Advanced Life Support (ALS) services. This division operates two ambulances, two medic units and one medical ATV and answers over 2,500 calls for service each year. The Director of EMS Operations is also the career staff manager and is the front-line supervisor for the full time and part time employees of the fire company.

Director of EMS Operations: Eric Nowaczyk

### Administrative Division

The Board of Directors Chairperson and President oversee the administrative function of the fire company. As with any Board of Directors, they are the governing body of the fire company with oversight on the finances and management of the company. The Administrative officers run the day-to-day tasks of the business administration of the company. The current administrative officers of the company are:

Board of Directors Chairperson: D. Matt Miles  
President: Joe LeBresco Sr.  
Vice-President: Gerald Vaughn  
Treasurer/Trustee: Beth Nields  
Board of Directors Vice Chairperson: Bill Nields  
Trustee: Barry Patton  
Trustee: Paul Marziani  
Trustee: Neil D. Vaughn



# Malvern Borough Administration

## Sign Up for Free Composting!

Malvern needs your help! We are looking for volunteers to participate in our new **Composting Pilot Program**. Participants will be provided with a bucket in which they can dispose of fruit/vegetable waste, yard debris, and other compostable items. These buckets will be collected at curbside every other week and brought to a composting site. This pilot program will be at **no cost** to Borough residents for one year.

Among other things, it is our hope that this pilot program will help lessen our carbon footprint, reduce air/stream pollution, and curtail future garbage collection costs. In addition to these benefits, participants will also be entitled to receive free compost for their yards and gardens.

With your help, the Composting Pilot Program will be a great success and contribute to saving our environment and making Malvern a better place to live.

If you are interested in participating, submit an email to [malvern@malvern.org](mailto:malvern@malvern.org) by **February 10, 2023**. Be sure to include your name, address, and telephone number for us to contact you. Before submitting your interest, please make sure this type of service is allowed if you live in an apartment complex or an HOA. Participation is limited to 50 households.



# Property Maintenance in Malvern

## Some Winter Season Code Enforcement Reminders

The winter weather that has already occurred means another season of snow and snow covered sidewalks and walkways. Please remember that after the snow has stopped falling, The **Malvern Borough Code** requires that sidewalks be cleared 36 inches wide within 24 hours after it has stopped. In addition, where icy patches result on sidewalks, please be sure to put down salt or some other material that will minimize the chance of someone slipping or falling until the sidewalk is clear and dry. If you have a neighbor who is elderly or unable to clear their sidewalk, perhaps several neighbors could help them out by clearing their sidewalk for them. This will help to ensure that all of the sidewalks in Malvern are passable this winter season. Remember also, it is unlawful to place the snow from sidewalks into the street.

Switching gears to the inside of your home, smoke detectors have been required in homes; one on each level including attics and basements and one in each sleeping room for more than twenty years! During use and occupancy inspections, I continue to find residences with no smoke detectors in sleeping rooms. Since they've been required in all of the mentioned locations for so long, the time to make sure that they're installed in the proper areas is now, not after it's called out on a U&O inspection.

When installing them in sleeping rooms, they should be located on the ceiling, somewhere near the bedroom door, at least a foot out from the wall. If the room has a ceiling fan, make sure that the detector is located several feet from the edge of the fan blades, otherwise the air movement from the fan may keep smoke from getting to the detector. If you must install smoke detectors on the wall, that's ok also, just make sure you mount them at least six inches down from the ceiling. Provided by William T. Wilfong IV, BCO, Code Official / Fire Marshal

# Shade Tree Commission

As we begin the New Year, the Shade Tree Commission would like to take this opportunity to reflect back on our accomplishments in 2022. These activities help insure our town's urban forest will stay strong for future generations. First, and most importantly, with the help of our residents and Public Works department, the STC oversaw the addition of 54 new trees planted throughout our town. It is important to note that 80% of these new trees are native plants that will support a healthier urban ecosystem. Last fall the STC finalized plans to implement Phase I of the King Street reforestation project. This plan calls for the Spring 2023 planting of 17 new trees along West King Street. The STC also planned and oversaw the planting of a selection of native plants that will help screen the Battlefield Park from neighboring homes. Members of the Shade Tree Commission were also busy this year conducting over 85 site visits, some to our neighbor's homes to offer tree selection, planting, and tree maintenance advice. Other visits involved meeting with developers to evaluate tree protection and replacement needs. A number of additional visits were made to our town's parks to determine and schedule tree maintenance needs. A couple of significant items resulting from these visits was identifying pruning needs in Rubino Park and the recognition of a number of very large dead trees located along the trails in the Battlefield Park. These trees have been removed for safety reasons. Other dead trees, located deeper in the woods, have been left to serve as a Wildlife Habitat.

Last, but certainly not least, with the assistance of our Borough Manager we were able to save six large trees along 2<sup>nd</sup> Avenue from being cut down. These mature trees were to be removed as part of a PECO project to upgrade their electrical system. While we had hoped to save a few more, to preserve six mature trees from removal was still a significant win. The STC is looking forward to 2023 and its continual work with our residents, Borough Staff, and other Borough Committees, in continuing to preserve the health and appreciation of our Urban Forest.

With that being said, we are pleased to announce the Pennsylvania Horticultural Society Tree Tenders Bare Root Tree Planting program for Spring 2023 is now being offered.

**If you are a Malvern Borough resident, and interested in planting a Bare Root Tree this spring, you can email the Shade Tree Commission at [malvernstc@malvern.org](mailto:malvernstc@malvern.org). Please include your name, address, and phone number. We will contact you and send the list of small, medium and large tree species. The Borough purchases the trees from PHS, and there is no cost to our residents.**





# Environmental Advisory Council

## Spring Cleanout - The Greener Way to Get Rid of Things!

Happy Spring! Are you excited to do some long-awaited spring cleaning but unsure of where certain items should be disposed of to minimize your environmental impact? There are new solutions evolving every day for disposal of specific types of items, but the abundance of information can be overwhelming. Here are some solutions for items that might not be bringing you or your family 'joy' any longer:

**Electronics/Clothing** – RetrieR has a hub in Philly and will take items such as clothes with or without holes in them or electronics, working or not! RetrieR will even pick up the items at your doorstep. They do charge a small \$10 base fee. Larger or difficult to recycle items may require an additional fee (think old TVs, mini fridges or dehumidifiers - \$35-50 each).

**Electronics** – Best Buy: They will take most consumer electronics that are old, unused or unwanted. Depending on the condition of the item they will either be repaired, repurposed or recycled. There are limits to the number of items and some item restrictions in PA (monitors/TVs aren't excepted). There are recycling areas in most Best Buy stores and it is free to drop off items. Downingtown is the currently the closest Best Buy location to Malvern.

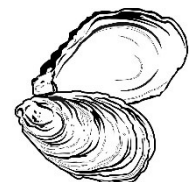
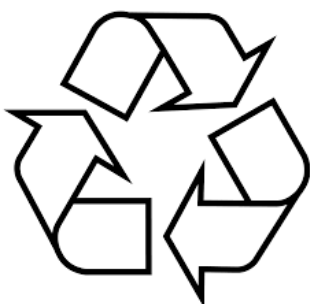
**Clothing** - FORDAYS is a US based company that is closing the loop on clothing waste. You can send your clothes (in any condition, but must be clean– no underwear, please!) in one of their 'take back' bags and they will recycle the items responsibly and may even turn them into a 'new' clothing item sold on their site. They do charge a fee of \$10 for a 'take back' bag, but your purchase will land you \$10 of credit to the site. They'll send a prepaid label so you can fill it up as much as you'd like!

**Clothing/Electronics** – GreenDrop was started in 2012 in Aston, PA, and they have over 15 locations in the Philadelphia area (two in Frazer/Malvern alone!). The donations benefit the non-profit of your choice when dropping off your goods: American Red Cross, Military Order of the Purple Heart, the National Federation of the Blind or the Society of St. Vincent de Paul of Philadelphia. In addition to clothing, they accept tools, collectibles, kitchenware, toys, small appliances, electronics, musical instruments and sporting goods. After dropped off and sorted, there are three channels the items may take: 1) the highest quality items are sold at 2nd Ave. Value Stores (thrift store). 2) Donated products are given new life in developing nations where individuals purchase used American goods for pennies of their original price. (Internationally, more than 14.3 million tons of donated American textiles help clothe people and families worldwide!) 3) Heavily worn or damaged donated products are recycled and broken down for their cotton, silk, polyester, and other fibers, which are used to manufacture new goods. Leather and plastics are recycled for reuse, while scrap metal and plastics from electronic and household goods are placed back in the manufacturing stream.

**Miscellaneous** - MOM's (Organic Market): MOM's is a Maryland based grocery chain that accepts other household items that are difficult to dispose of. They are currently accepting: cell phones and tablets, batteries, compost, eye glasses, oyster shells, shoes, and natural corks! The nearest MOM's is in Bryn Mawr on Lancaster Avenue. They even have annual drives where they accept denim and holiday lights for recycling! Fun fact: the oyster shells are part of the Oyster Recovery Partnership and make their way down to the Chesapeake Bay to help restore the oyster reefs! The eyeglasses are either 1) sent to Togo, Africa where they are fitted and distributed to the visually impaired who cannot afford eyeglasses, or 2) cleaned and sorted by the Lions Recycle for Sign program and distributed to low and middle income communities.

No matter which option(s) you choose, we hope that you'll consider the environment when cleaning out your home this spring!

Submitted by EAC Member, Tiffany Brouillet





# Parks and Recreation

## Why is Burke Park Called Burke Park?

Burke Park is undoubtedly the center of Malvern Borough, the heart of activities and events, and a wonderful place to simply sit and enjoy the sounds of the town. But who is "Burke"? **Sam and Betty Burke!**

Samuel and M. Elizabeth (better known as Betty) Burke moved to the borough after getting married in 1949 from Philadelphia. Both busy parents raising 4 children and each busy with their own careers, they choose a path of dedication and service to Malvern for over 50 years. They built a home in the Borough where they raised their 3 sons and 1 daughter. Though her brothers have moved out of town, Karen still lives in the Borough, along with her husband Mike, and their two daughters.

Betty was a Nurse Educator based in Philadelphia until she retired and went on to work nights for Dr. Clifford Lewis, one of Malvern's local family doctors. Sam had taken a path that was a bit different. He was a co-founder of the Malvern Institute. He was the administrator of the facility for many years. Sam, like Betty, choose a second career later on. He studied and became a Nurse Anesthetist where he was employed from 1980 and onward at the Graduate Hospital in Philadelphia.

Betty and Sam impressed on their family and friends that they wanted to make a thriving town out of Malvern. He wanted to see improvements in the infrastructure of the Borough. She wanted to build on the history and beauty of the borough. And together they revitalized and improved this 1.3 square mile village forever! They recognized the significance of the land, the historic importance of Malvern, they kept in mind that Malvern dates back to days of the Victorian era, and that all types of folks want to live here and call it home. Their years of contribution and dedication are numerous.

Betty was the President of the Board for the Malvern Public Library for 25+ years. She served on the Malvern School Board from 1961-1968 (before it was Great Valley). She was famously the Tax Collector for the Borough for decades. She knew everyone!! In fact, it was well known that she went to the homes of some of our Malvern neighbors to help them complete their taxes if they were having a struggle with it. Not one to shy away from politics, Betty also volunteered as the Republican Committee Chairperson for Malvern for 38 years. Betty was known to drive to homes and deliver voters to the polls on voting day to be sure that everyone had their opportunity to vote.

Sam kept himself just as busy. He served on the Borough Council for 20+ years. In fact, he was Borough Council President for 2 terms. In addition, he served on the Shade Tree Commission for years. Sam worked diligently with then-Borough Manager, Pat McGuigan. His tireless efforts to bring the "Victorian look" to the borough are well noted each time you walk down most of our streets and see the Victorian style streetlamps and the sidewalks with the red brick pavers. He spearheaded the project to rebuild Bridge Street, adding the sidewalk so our town is more accessible and more walkable. (I use the bridge almost daily on my walks into town.)

Sam and Betty certainly did remember the history of our town and fought to have it memorialized. Sam spearheaded the fight to preserve the Paoli Battlefield. He, along with others, raised \$2.6 million+ in donations and grants to purchase the Battlefield to protect it from real estate developers. Betty, not one to shy away from the opportunity to donate her time, was a contributor to the documentation of our history in the 1989 publication of "A Century Of Malvern". Her knowledge base of the history of Malvern along with her own living history was well documented in the book.

The site that Burke Park sits on holds historic value in that it was the Matthey Bishop Platinum Works until it shuttered its doors in the 1970's. The history behind that is for another time- but well worth hearing. Once razed, the land was rededicated as a park for public use. And that is where the story of Burke Park begins- where we enjoy the Farmers Market on Saturday mornings, Yoga or Qigong at sunrise in the summer, Malvern on Ice, Pizza in the Park, S'mores in the Park, Game Night, Music under the gazebo, share a book at the Little Free Library, swing on a swing, and the list goes on!!

We are forever in your debt for your timeless energy, enthusiasm and commitment M. Elizabeth and Samuel Burke!



Submitted by:  
Helise Bichesky, DO  
Chairperson, Parks and Rec

## Paoli Battlefield Historical Park

We entered 2023 after just completing our 6<sup>th</sup> **Wreaths Across America Celebration** - live streamed on our Facebook page and sponsored by The Daughters of the American Revolution, PBPF & the Paoli Memorial Association. This free event is presented annually throughout America to help **Remember, Honor and Teach**: to *Remember* our fallen heroes, *honor* those who serve and *teach* our children about the sacrifices made by veterans and their families to preserve our freedoms. Observed annually in December, National WAA Day is a movement to cover all Veterans grave markers with a Christmas wreath.

### "A REVOLUTIONARY LECTURE SERIES" ON-LINE & IN-PERSON

PBPF is in the process of arranging new lectures, both on-line and in-person at the General Warren and perhaps an additional historic location. Please check our website for new additions.

### PARANORMAL TOURS OF THE PAOLI BATTLEFIELD

A Spring lecture is planned reviewing our two **sold-out** Paranormal Tours and their findings in 2022. The next Paranormal Tour will be presented later in the Spring. Please check our website for the dates and costs.

### UPCOMING EVENTS

**Walking Tours of Paoli Battlefield**

**Weekend Tours will be scheduled!**

**\$20/per person**

Get details on events, news, history & make your reservations on our website **RememberPaoli.org**, Friend us on our Facebook Page (Paoli Battlefield Historical Park), follow us on Twitter (@PaoliBattle), and sign up for our digital newsletter on our website.

We also sell books and merchandise relating to the Paoli Battlefield online and at the Mad Anthony Wayne Café located in the Wayne Train Station (135 North Wayne Avenue, Wayne).

## Upper Main Line Memorial Association

The 155th Malvern Memorial Parade is set to step off at 1:30pm on Sunday, June 4, 2023, presented by the Upper Main Line Memorial Association. The parade route remains unchanged, with lineup at the Malvern Fire Company on the east end of King St. The parade moves westward to Warren, south on Warren to Monument Ave, and then west again on Monument to the east entrance to the horseshoe drive to the Paoli Memorial Grounds and the Malvern Monument Park, where the 207th commemoration will take place once the parade concludes.

Our parade is the oldest in the United States that honors our military and their sacrifice. Decoration Day was first observed at Arlington National Cemetery in 1868 on May 30, just after the end of the American Civil War. In 1869, many towns and cities began their annual Decoration Day remembrances on May 30. The Paoli Parade Grounds were included in the Sunday, June 6, 1869 exercises--you may realize that the word "Day" is not included in our parade name, as ours has been held on the Sunday after Decoration/Memorial Day since its inception.

However, our honoring of America's deceased military members goes back even further than the national Decoration Day decree, as our first (known) commemoration was in 1817, just 40 years after the Revolutionary War skirmish called "The Battle at the Paoli" Tavern or "The Paoli Massacre." That September saw the white stone monolith installed over the mass grave of 52 soldiers. Annual commemorations continued, often taking place in the form of military exercises with food sutlers and other temporary market stalls taking up the Memorial Grounds for multiple days around the Battle's anniversary of September 20-21.

We are very proud to say we not only have the oldest Memorial Parade, but we are very grateful to the volunteers who organize, run, and participate in the parade and remembrance ceremony at the park. Our parade committee will begin meeting soon; we also could use a few hands with set up, tear down, and making sure things run smoothly both at the parade beginning location and throughout the route.

Of course, we also would love participants. If you have walked in the parade before, or have a civic group that would like to join in this year, please reach out to the Upper Main Line Memorial Association chair, Larry Buchholz, at his email [larrybuck.lb@gmail.com](mailto:larrybuck.lb@gmail.com)

# Malvern Historical Commission

## New Ventures for the Historical Commission

At the close of 2022, the Historical Commission was celebrating the release of their blanket depicting 9 historic scenes of Malvern Borough, circa 1889-1930. Scenes are (from top left): The Paoli Memorial Grounds, from a postcard around 1890; David Evans' House, with the Baptist Church in the background, circa 1880, where the St. Patrick Church stands today; the Malvern Inn, which remains virtually unchanged since it was built in 1887; The National Bank of Malvern, circa 1900; The Monday Afternoon Club building built in 1928, which later became Borough Hall and the library and is now the Willistown Country Day School; The Malvern Train Station; rebuilt in the early 1890s after a fire; The Charles E Hires Factory, which manufactured both condensed milk and rootbeer (Hires used the term as a single word) in the building shown circa 1900 and demolished in the 1930s, and is where Sheffield Furniture stands today; the 1930 Malvern Fire Company Pumper, reproduced from a photo from their 2013 125th anniversary parade; and in the center is the First Baptist Church of Malvern, whose building is nearing its 150th anniversary. A few blankets remain! Please email [malvernborohistory@malvern.org](mailto:malvernborohistory@malvern.org) for available colors and to set up a time to make your purchase.

We'd like to invite you to join our social media pages on Facebook and Instagram, with the username on both as @malvernborohistory. There, you will find fascinating photos and information from years' past, but more importantly, we hope to share with you our progress on our History Center renovation. Since Borough Hall's last renovation in 2006, we have had a room on the second floor of the building to house and display our historic treasures, mostly donations from Malvernites like you! This is the first opportunity for us to have a fresh paint job and choose our own carpet. We hope to once again have open houses, permitting Malvernites from past and present to see our treasures and meet your historical commissioners.

Once the History Center reopens, we'll gladly share more opportunities for everyone to stop by and peruse our available items. We have three books still in print, as well as anniversary coins from 1964, 1989, and 2014 centennial posters, centennial paperweights, 125th anniversary banners, and our very popular reproduced postcard series of two dozen historic scenes.

# Malvern Borough Grant Funding

## DCNR Grant Awarded to Malvern Borough

The Department of Conservation and Natural Resources has awarded Malvern Borough \$324,800 from the Community Conservation Partnerships Program. With this grant, DCNR shows their commitment to building community conservation partnerships with local governments and nonprofit organizations to protect critical natural areas and open space. This award was received from DCNR in "recognition of outstanding recreation and conservation work that should be shared with you community". This additional funding will be used toward Phase 1 of our Randolph Woods Master Plan. Borough Council President Amy Finkbiner stated, ***"With this additional grant funding, Malvern Borough is preparing for a \$1,151,500 investment in the Randolph Woods Nature Preserve. We are thrilled to preserve and protect this natural setting while enhancing access for all our citizens."***



# Malvern Business Professional Association

## Winter News

Not an insider yet? You can join by texting **MALVERN** to the 5-digit phone number **55678** and following the prompt to confirm. Once you have joined, you can upload your receipts here: <https://mhi5.us/V5S5A> or by scanning the QR code below.



Discover Malvern  
Enter to WIN \$100 to Alba!

Sponsored by the MBPA

Open to Malvern Insiders Only  
Not a member?

- Join the Malvern Insiders Program by texting **MALVERN** to **55678**
- Follow the prompt to confirm

MESSAGE & DATA RATES MAY APPLY  
TO STOP, TEXT STOP TO 55678. FOR HELP, TEXT HELP TO 55678  
TERMS and CONDITIONS / PRIVACY POLICY: <https://mhi5.us/K7CZV>

Shop or Dine on King Street  
Snap a Pic of your Receipt to enter to WIN!

SCAN QR Code to upload your receipt to enter! Receipts dated 1/10-2/10/23 are eligible. Or visit <https://mhi5.us/V5S5A> to upload

SCAN ME To Enter



***There will be no strolls in January or February, however, we are hosting a special event on February 11<sup>th</sup>, called "Spread the Love"***

### **January Event:**

The MBPA invites all Malvern Insiders to "Discover Malvern" between Jan 10<sup>th</sup> and February 10<sup>th</sup>. Shop King Street or dine at one of our restaurants and upload your receipt here: <https://mhi5.us/V5S5A>. Every receipt entered is an entry into a drawing to WIN A \$100 gift card to dine at Restaurant Alba! Winner to be notified by text on **2/11/2023**.

### **February Event:**

Help "Spread the Love" throughout Malvern on Saturday, February 11<sup>th</sup> from Noon – 4 pm. The MBPA and 14 merchants along King Street will be stops for the Wine and Chocolate Pairing Event. Stroll King Street and stop into one of the stops on the wine & chocolate trail and sample a different locally produced Valentine Chocolates bom bom paired with a different Italian wine, curated by local wine expert, John Vestry of Vino d'Italia. When we had this event last year there was a HUGE turnout so make sure to save the date! Free to the community!

### **March Events:**

Malvern Stroll resumes on March 16, 5-8 pm. Step out onto King Street and take advantage of all the St. Patrick's Day promotions!



## Malvern Borough Happenings

The Malvern Farmers Market is open outdoors, YEAR ROUND and highlights the very best in locally grown food. **During the winter season (Jan-Apr 2023), markets are held on the 1st/3rd Saturdays from 10am-12 noon in Burke Park.** Our producer-only market features locally grown fruits and vegetables, grass-fed meats, pasture raised poultry and farm fresh eggs, artisan baked goods and breads, local beer & spirits, kombucha, hand-made pasta, local honey, and value added products made with locally sourced ingredients. We are committed to supporting and promoting the rich agricultural history of Chester County and beyond!

Visit [www.GrowingRootsPartners.com/Malvern](http://www.GrowingRootsPartners.com/Malvern) for up to date information, including a weekly line-up of producers or to subscribe to the market newsletter.



## Malvern Borough Events

**February 11, 2023:** Spread the Love Event. 12pm-4pm on King Street. Hosted by the Malvern Business Professional Association.

**March 11, 2023:** Cabin Fever. 12pm-3pm, Borough Hall, Second Floor. Hosted by Parks and Recreation Committee.

**March 16, 2023:** Malvern Stroll Resumes. 5pm-8pm along King Street. Hosted by the Malvern Business Professional Association.

**April 2023:** (Date and Time TBD) Egg Hunt at The Paoli Memorial Grounds.

This year residents were greeted by a festive holiday lighting display all along King Street. The merchants all worked together to add to the festive atmosphere by decorating their individual business' windows and facades with special holiday scenes. The business association wanted to light up King Street as an homage to the retreat of our pandemic isolation and to encourage residents to step out on King and enjoy shopping and dining at our local treasures. A well-lit business district just made it more inviting. We thank the Borough and all the countless residents and business owners who chipped in to make this lighting display possible.

**Submitted by:** Malvern Business Professional Association

Upcoming  
Events!