

# Malvern Borough

# The Borough Broadcaster

Spring Newsletter

Spring 2023



### Malvern Borough

1 E First Avenue  
Suite 3  
Malvern PA 19355

Phone: 610-644-2602  
Fax: 610-644-4504

## Malvern Borough Happenings

### The History of The Clock at Burke Park

Mayor Pisano approached Borough Council and requested that he be allowed to solicit nine (9) \$1,000 donors, including a \$10,000 donation made by him, to purchase and install the clock for the community. The ambitious request was printed in *The Suburban Advertiser* (the Thursday weekly paper, now under the umbrella of Main Line Media News), and donations poured in. The Malvern Community sent in funds to the Borough Manager Pat McGuigan in donations as small as \$5 and for a great length of time. There was an overwhelming response to Mayor Pisano's request.

Mayor Pisano then sought other ways to use these generous donations to serve the community as best and as widely as possible.

Items included the flagpole at Burke Park and the brickwork around the pole and clock. The Malvern Borough Police Department benefitted from bike and uniform purchases. An \$8,000 donation was made to the Malvern Fire Company with the funds raised. The bulletin board located at the Post Office was one of the last small projects completed with the funds from Burke Clock donations.

The Malvern Public Works Department recently painted the Burke Park clock as shown in the following picture. It was officially installed by the Public Works Department on June 11, 1997. Take a stroll by if you have not recently to honor the history and beauty the clock brings to the Malvern Community.



### Inside this issue:

Malvern Borough Happenings	1
Borough Trash Contract	1
Malvern Police Dept.	2
Shade Tree Commission	3
Codes Enforcement	3
Malvern Library	4
Environmental Advisory Council	5
The Mayor's Office & Parks and Recreation	5&6
Upper Main Line Memorial Associations	7
Historical Commission	8
Malvern Business Professional Association	9
Upcoming Events	9

## Borough Trash Contract

The current Borough trash contract ends with A.J. Blosenski as of June 30, 2023. We anticipate any new contract to be substantially higher in cost due to inflation, fuel costs, employee retention issues, etc. The Borough will begin to solicit bids for a new provider and may specify multiple service options in order to compare pricing. Some of the service options that have been mentioned include reducing collection to one day per week, requiring residents to use bins provided by the trash company, and/or scheduling bulk trash pickup to twice per year.

The Borough is looking at cost saving measures to suit the best interest of the entire Community and will try our best to keep services comparable to what are currently in place. Borough Council has directed Borough Staff as of their March 21, 2023 regular meeting to commence the bid process which will be completed by the end of April.



# Malvern Police Department

**Happy spring! Once again our Malvern Police Officers have been busy so far this season.**



If you see a new face patrolling the borough, make sure you say hello! Officer Patrick Rose was sworn-in on January 27<sup>th</sup> as a part-time officer. Officer Rose was introduced to Borough Council and the residents in attendance at the Borough Council Meeting on April 7<sup>th</sup>. Welcome, Officer Rose!



If you attended the Easter Egg Hunt on April 8<sup>th</sup>, we hope you got a chance to say hello to Officer Keating who spent some time with the Easter Bunny and look for our officers during the upcoming Surfing USA event in May.

- ⇒ It's that time of the season for our officers to be back out on bike patrol. Towards the end of the fall Chief Marcelli reinstated bike patrol after receiving a new hybrid bike. Make sure you say hello as they ride on by.
- ⇒ In March public works department added new fencing along the police department. Please be mindful of these areas and respect our No Trespassing signs.

**Once again we would like to thank all of residents and local business owners for their constant support to our department. We are proud to serve the community whom we swore to protect and hope you will call us if the need arises.**

**For emergencies, call 911 and for non-emergencies call 610.647.1440. Follow us on our [Facebook](#) and [Instagram](#) pages**

**Now that warmer weather is approaching here are a few tips to keep yourself and your home protected:**

- Keep your doors and windows closed when you are not at home when the weather nice, especially lower level windows.
- Keep all bushes, hedges, flowers under windows trimmed so they do not cover windows and clear enough you can see around.
- Keep your cars locked at night and items left in car not visible. (ie: packages, CDs, change, phone accessories, etc.).
- We all know this time of year can put a "spring" in your step. Be sure when outside, especially at night, wear colorful or reflective clothing. Children riding bikes should have helmets and reflectors on their bikes and keep your pets secured with a leash when walking.



# Shade Tree Commission

## Your Shade Tree Commission in Action

This spring be on the lookout for seventeen beautiful new trees to be planted along W. King Street. This project has been several years in the making, and is now beginning to come to fruition. The planting of these trees is Phase I of The King Street Tree Planting Project. We will continue to work with residents and businesses to make the reforestation of King Street possible.

With the approval from Borough Council and support from Borough Administration and the Borough Engineer, the STC is now implementing their vision for the beautification for all of King Street.

### Why is this project so important to the Borough?

Urban forests help to filter air and water, control storm water, conserve energy, and provide bird and animal habitat and shade. They add beauty, form, and structure to urban design. By reducing noise and providing places to recreate, urban forests strengthen social cohesion, spur community revitalization, and add economic value to our communities.

Street Trees specifically:

- **Improve neighborhood appeal:** Trees attract businesses, shoppers and homeowners.
- **Increase property value:** Homes with trees sell 4-6 weeks faster and for 20% more.
- **Increase sales:** People shop longer and will pay 20% more for an item in a treed shopping center.
- **Cool cities and towns in the summer:** Trees reduce heat generated by hard surfaces by about 12 degrees.
- **Save on utility costs:** Three properly placed shade

trees save an average household up to \$250 annually in energy costs.

- **Purify the air:** Trees absorb CO2 and filter particulates. Trees can absorb carbon dioxide at a rate of 22 pounds per year during their first 20 years of growth. In that same year, that exact same tree will produce nearly 260 pounds of oxygen.
- **Mitigate storm water:** Trees absorb water, which prevents sewer overflow and saves communities millions of dollars in water treatment costs. A single mature tree can draw up 100+ gallons of storm water.
- **Protect roads:** Trees shade roads, reducing road maintenance costs by 50% and helping roads last 20-30 years longer due to canopy coverage.
- **Improve student performance:** In schools that have trees on or near the property, students can score higher on report cards and can be more attentive in class.
- **Keep neighborhoods safe:** Treed communities have a reduced level of domestic violence and foster safer, more sociable neighborhood environments.

With these tree enhancements, our community will continue to be a desirable place to live, stroll, shop, study, and play.

Statistics from the State of New Jersey Department of Environmental Protection and the NJ Forest Service

# Property Maintenance in Malvern

## Hedges, Bushes, Trees; Sidewalks, Walkways and Streets

As the hedges, bushes and flowers grow along the sidewalk of your property; please make sure they don't obstruct the sidewalk. This makes it difficult and possibly dangerous for pedestrians using the sidewalks. In light of Malvern Borough's size, many people use the sidewalks to get around. All vegetation along sidewalks must be trimmed back just behind the paved area. In addition, where vegetation is planted near road intersections, keep them trimmed back so they're not a sight hazard to motorists attempting to go through those intersections.

If you have trees that hang over the sidewalk and road, trim them up so that there is at least eight feet from the sidewalk to the bottom of the branches and at least thirteen feet from the street to the lowest branches.

While clearing back the hedges and bushes from your sidewalks and walkways, be sure to have a look at the walkway and sidewalk blocks. If tree roots or frost heave lifted them up during the winter and there is a half inch or greater difference between blocks, or if they're cracked and the crack is a half inch wide or greater, they must be repaired or replaced to eliminate the trip hazards between the blocks or cracked areas.

The **2015 International Property Maintenance Code**, as well as the **The Code of the Borough of Malvern**, requires that exterior property areas be kept clean and "free from hazardous conditions." All residents and businesses that have hedges, bushes and trees along sidewalks and streets must help keep them safe by ensuring that the sidewalks and streets aren't obstructed and that there are no trip hazards in the sidewalks.

# Malvern Library

## The Malvern Library is 150 Years Old!

This year marks 150 years since the Malvern Public Library came into existence and we are celebrating! In 1873, members of the Society of Friends formed the Malvern Library Company for \$5 a share. Today, MPL houses over 28,000 physical items. Besides books, cardholders can borrow museum passes, board games, puzzles or attend one of our 250 free programs held per year. Check out our website for upcoming sesquicentennial celebrations. Thank you, Malvern for your continued support and here is to 150 more years of reading, sharing, gathering and learning at the Malvern Public Library!



Maggie Stanton, Malvern Library Director, speaks with Senator Carolyn Comitta before the presentation of a citation from the Pennsylvania Senate commemorating the 150<sup>th</sup> birthday of the Malvern Library.

## NEW FOR MALVERN LIBRARY CARDHOLDERS



Access Kanopy PLUS, a free streaming service with an expertly curated collection of light-hearted films, compelling world cinema, documentaries, and kids' favorites. To get started go to: <https://ccls.kanopy.com>.

Access over 1000 online art and craft classes and workshops for free. All classes remain online so you can work at your own pace. To access, go to the Chester County Library System website and click on databases or go to <https://www.creativebug.com/lib/chescoliberalies>.



## Upcoming Events

### For The Kids

**Tinker Time! 4/27, 5/31**

Learn how to use Tinkercad to make designs ready for printing on our 3D printer!

**Mother's Day Story Time! 5/9**

Mother's Day Story and Craft!

**Art Historian Junior! 5/18**

Short Story and art activity based on a great artist!

For information on Lego Club and more story and craft times throughout the spring, visit our calendar at [www.malvern-library.org/calendar](http://www.malvern-library.org/calendar)

### For the Adults

**Intro to Braver Angels: Crossing the Divide: 4/15**

Join us for an intro to this non-partisan movement which seeks to depolarize American politics.

**The Benefits of a Gluten Free Lifestyle and GF Snack Time Cooking Class: 5/8**

Come learn about the benefits of a gluten free lifestyle!

Poetry Circle, Poetry Writing Group, and Book Club continue to meet through Spring. Some events require registration. Please check [www.malvern-library.org/calendar](http://www.malvern-library.org/calendar) for details.

**HEY PARENTS AND CAREGIVERS! INFORMATION ON GO WiMa WILL BE AVAILABLE SOON! Make sure to ask a librarian or keep checking our website for more information.**

# Environmental Advisory Council

## The EAC At Work – Where We've Been and Where We're Going

Malvern Borough's Environmental Advisory Council (EAC) has been diligently investing time and energy to maintain and develop Malvern's natural resources and make Malvern more sustainable. The goal is to educate the community about the benefits of sustainable practices in the neighborhood and encourage environmentally friendly practices. The EAC plays a proactive and collaborative role in contributing to an environmentally healthy community.

The EAC was instrumental in initiating the **Curbside Composting Pilot Program**, which launched in April 2023. Compostable waste is being picked up from 50 households in the Borough. This pilot program will be used to determine the feasibility of implementing community-wide curbside composting in Malvern.

The EAC has prioritized storm water management efforts in the Borough. The EAC supported the construction of **Quann Park's Rain Garden**—Malvern's first public rain garden. The EAC will continue to work with neighborhood communities and residents to build their own rain gardens. The EAC, Malvern Planning Commission, and Malvern Borough Council is working towards developing a **Storm water Master Plan**, a comprehensive plan to address storm water in Malvern. With the support of Malvern Borough, Chair Zoë Warner completed the **Master Watershed Steward** training program. The EAC's newest member, Cecelia Oswald, is also a Master Watershed Steward. With this training, they will help navigate the complex issue of storm water management in the Borough and protecting the stream headwaters within our borders.

The EAC has also been focusing on increasing energy efficiency. Borough Hall is now illuminated with highly efficient **LED Lights**. Police patrol cars now have **Electric Charging** capability for the interior equipment which prevents the cars from idling while parked at the station. Borough holiday lights will be converting to **Energy Efficient Lights**. Conversations have begun regarding **Solar Panels and energy conserving Holiday Lights** in the borough.

In addition, new ecological initiatives are coming to Malvern. The EAC is working with Borough Council to have Malvern designated a **Bird Town**. The EAC is also developing projects to support the **Mayors Monarch Pledge** and the **Homegrown National Park** initiative to regenerate biodiversity. Watch for EAC sponsored events to plant **Butterfly and Pollinator Gardens** in our parks and an **Invasive Removal** event. Learn about increasing biodiversity in your garden with the EAC **Healthy Gardens/ Native Plants** article.

Finally, the EAC is pleased to have provided the new **Recycling Bins** in a few of our parks.

**The EAC meets the 4th Thursday of each month in Borough Hall. Similar to all borough committees, we welcome volunteers for EAC events and encourage public comment!**

Submitted by: Zoe Warner, Chair & Helise Bichesky, DO, Vice-Chair

## The Mayor's Office & Parks and Recreation

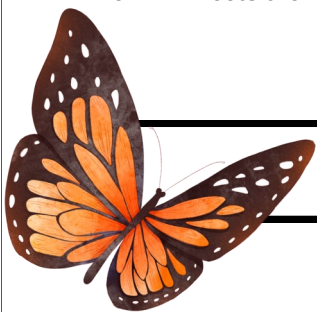
### Bring Back the Monarch Butterfly

As part of the borough's recent pledge to take action to protect and save the Monarch Butterfly, some of our parks and open spaces will be host to Monarch Butterfly Gardens and Habitats.

This iconic butterfly has seen a recent decline in the eastern populations by about 90%, and western populations by about 99%. Overall, these numbers are consistent with eventual extinction unless active care is taken to turn the tide.

Thus, we all need to become environmental stewards to protect this precious resource. As we join as a community, along with the borough council and committees, administration and mayor, Malvern Borough will create healthy habitats for the Monarch and other pollinators to thrive.

The severe decline of the Monarchs is multifactorial. Herbicides, pesticides, loss of habitat, extreme weather conditions, agricultural practices, and land development contribute to plummeting numbers. As stewards of our environment, we can take an active role to stop and even reverse this decline.



# The Mayor's Office & Parks and Recreation

Monarchs contribute to the delicate balanced food web within the ecosystem that is critical to sustaining humans. This is made possible by their unique migration pattern across the continent. Butterflies, along with other pollinators including bees, birds, bats and others, pollinate over 75% of the world's flowering plants. Flowering plants are so connected to butterflies that one can't survive without the other. These pollinators are responsible for the health of many foods such as blueberries and squash.

## HOW TO CREATE A MONARCH HABITAT

Native plants are key for attracting Monarchs. **Milkweed is essential for breeding.** The female Monarch lays her eggs **only** on Milkweeds - plants in the *Asclepias* genus - where the caterpillars will hatch, feed, and grow before forming a chrysalis. Monarchs also require native flowering plants, wildflowers, to drink nectar from. Monarchs, as with all other wildlife, need shelter from harsh or extreme weather and predators. Shrubs and tall grasses densely placed together help protect against the wind. A brush pile consisting of woody material, loose branches, leave litter, bunch grasses, etc. on top of larger logs or other organic materials offers safety and protection from the elements. The optimal habitat is in an open and sunny space. Some, though prefer a tree canopy.

### Fun Facts about Monarchs:

- ◇ Monarchs weigh less than a paperclip, less than 0.75grams!!
- ◇ Monarchs fly up to 10,000 feet high!!
- ◇ Monarchs are picky eaters. The caterpillars only eat Milkweed. Milkweed is essential for reproduction of the Monarchs. As adults, native wildflowers are best.
- ◇ The Monarch has a fascinating migration story. Monarchs born late summer migrate to Mexico and back north in the spring. This cycle can take up to 5 generations to complete!
- ◇ The Monarch is poisonous. Not to you and me though. They eat a poison in the milkweed which they are immune to. This gives them a terrible taste to anyone who tries to eat them!
- ◇ Tropical Milkweed is dangerous to the Monarch- *Asclepias Curassavica*- better known as Mexican milkweed, Scarlet milkweed or Blood Flower. Beware! This plant grows later in the year and thus confuses the Monarch to breed when they should be migrating! Only Native species please!!

**REGISTER YOUR MONARCH HABITAT!!** [www.MonarchWatch.org](http://www.MonarchWatch.org)

**FIND PLANT LISTS AT:** [www.xerces.org](http://www.xerces.org)

**Monarch Butterfly Nectar Plant Lists for Conservation Plantings**

**More info at: www.WorldWildlife.org**



Scan for information on  
upcoming P&R Events

#### Native Milkweeds:

- Common Milkweed *Asclepias syriaca*.
- Butterfly Weed *Asclepias tuberosa*.
- Swamp Milkweed

#### Native Nectar Plants (Abbreviated List):

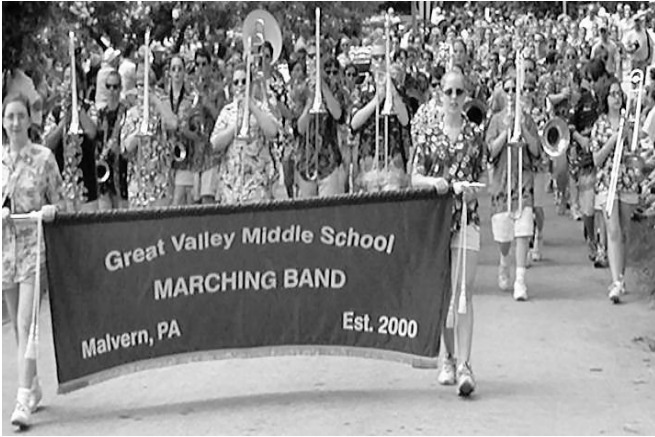
- Narrow Leaf Sunflower
- Wild Bergamot
- Black-eyed Susan
- Wreath Goldenrod
- Smooth Blue Aster

Submitted by:

Helise Bichefsky, DO, Chair

# 155<sup>ND</sup> ANNUAL MEMORIAL PARADE

SUNDAY JUNE 4 2023 @ 1:30PM DOWNTOWN MALVERN



## Thank you!

for your past support of the  
**Malvern Memorial Parade**

Thanks to neighbors like you, we have the **Oldest Memorial Parade** in the Nation, honoring military service men and women, right here in Malvern! For over six generations, businesses and residents have generously supported what has become one of the area's premier family events.

May we have your support again this year?

### PARADE HIGHLIGHTS

- ★ Military band
- ★ Military color guards & vehicles
- ★ Floats & specialty units
- ★ Military Re-enactors
- ★ Fire trucks & antique cars
- ★ Bands, Bands and more Bands!
- ★ Youth groups & sports groups
- ★ Local Dignitaries

### SATURDAY NIGHT JUNE 3

#### PICNIC AND CONCERT IN THE MALVERN MEMORIAL PARK PAVILION

- ★ Bring your own chair and picnic dinner  
6:30-8pm
- ★ Chester County Concert Band at the pavilion 7-8pm (Donations accepted)

#### MEMORIAL PARK ACTIVITIES

(FOLLOWING THE PARADE)

- ★ 207th Memorial Commemoration
- ★ Food & "rest" facilities available



**New Members Needed!**

All contributions are tax deductible and will be acknowledged in the Parade Program

For more information call 610-647-3084 or 267-648-2773

**Thank you and we hope to see you at the Parade!**

[www.MalvernMemorialParade.com](http://www.MalvernMemorialParade.com)

### **UPPER MAIN LINE MEMORIAL ASSOCIATION**

*Larry Buchholz Chairman, Carole & Frank Ortner Chairpersons Emeritus, Rich Lee, Bob Bucco, Hugo Schmitt, Chris Hirschfeld,*

*Pete Lindstrom, Jim Vike, Jim Christ, Eric Stetson*

Please complete and return with your tax deductible contribution made payable to:

**Upper Main Line Memorial Assoc. PO Box 544 Malvern, PA 19355**

Name: \_\_\_\_\_ Enclosed is my check for: \$125 \$100 \$50 \$25 \$\_\_\_\_\_

AS IT SHOULD APPEAR IN THE PROGRAM

Address: \_\_\_\_\_

I want to participate in the following way. Please contact me; my phone number is \_\_\_\_\_

My group would like to march. My group is \_\_\_\_\_

I want to participate on the Parade Committee

## Malvern Historical Commission

On March 23, 2023, a new day dawned for The Malvern History Center on the second floor of McGuigan—Borough Hall. After new carpet, paint, and a spiffy new set of shelves (thank you to Ira Dutter and the Borough Public Works crew), several local dignitaries helped us welcome guests to our new space. Guests included State Senator Carolyn Comitta (who fashioned a lovely short video about the day which we shared on Facebook), State Representative Kristine Howard, and County Commissioner Josh Maxwell. Malvern Mayor Zeyn Uzman collected several treasures which were gifted to the historical commission on this day, as well as a map given to us by former historical commissioner Dottie Mallon and her husband Mike. Look for those to go on display when we get to the summer months.

The former History Center setup was focused on research and the storage of historical artifacts collected over the years. The new arrangement permits us to put some of our historical things on display and to rotate them out every so often. Currently, one display is a history of Burke Park; how it came to be a park, and what was there before Malvernites voted to make it a public park. Another display shows photos that match or are of the items on display, such as photos of the Roberts Lane water towers in the early 1990s along with a pair of bookends created from the last pieces of metal from when the water towers were removed just a few years later.

The Historical Commission invites the public to stop by during our open hours. As your seven commissioners are all volunteers, open hours are currently limited to 2-4pm on various Saturdays at least once a month. Please check our Facebook, Instagram, or email us at [malvernborohistory@malvern.org](mailto:malvernborohistory@malvern.org) to confirm.

While you're reaching out to us, feel free to ask for more information on our limited-edition woven blankets. All 3 colors (red, blue, and green) are available at publication time. We also welcome requests for any of the 3 history books on Malvern still in print (*A Century in Malvern*, *Malvern Items*, and *Malvern Treasures*).

Finally, nominations from the public for our annual Preservation Awards would be most helpful. While your commissioners live in all areas of the borough, perhaps there's a building we've missed near you that should be honored! Buildings that show how Malvern's past is still present today would likely be older than 50 years, unique in certain features such as windows, dormers, balconies, etc., or perhaps a building that's been restored or maintained in a way that honors the era in which it was built.



**Residents and history buffs are welcome to attend our public meetings on the 2nd and 4th Tuesdays of the month, in the Hibberd Room on the 2nd Floor of McGuigan—Borough Hall at 1 E First Ave.**



# Malvern Business Professional Association

## Upcoming Spring Events

Market season is upon us! The Malvern Farmers Market officially opens for the season on **Saturday, April 29!** Join us every Saturday in Burke Park from 9AM to 1PM. Our producer-only market features locally grown fruits and vegetables, fresh cut flowers, grass-fed meats, pasture raised poultry, farm fresh eggs, artisan baked goods and naturally leavened breads, local beer & spirits, hand-made pasta, local honey, and value added products made with locally sourced ingredients. We are committed to supporting and promoting the rich agricultural history of Chester County and beyond! Visit [www.growingrootspartners.com/malvern](http://www.growingrootspartners.com/malvern) for up to date information, including a weekly line-up of producers or to subscribe to the market newsletter



SURFIN' USA spring festival is coming to Malvern on **Saturday, May 6, 2023**. Presented by MBPA and Traynor Capital, this day full of big wave fun starts on King Street from 12PM to 4PM with food trucks of many varieties, a beverage garden featuring Locust Lane beer, PA Distilling spirits, and Dressler Estate cider, FREE face-painting & balloon artists, and live music all the way down King. In Burke Park from 4PM to 6PM, find more food & drink, kids activities, and a LIVE concert featuring Gary Roland & the Landsharks. Hang ten with us in Malvern for **SURFIN' USA on Saturday, May 6, 2023 from 12PM to 6PM!** More details at [www.malvernbusiness.com](http://www.malvernbusiness.com).

## Malvern Borough Events

**Saturday, April 29**– Malvern Farmers Market in Burke Park from 9:00AM to 1:00PM

**Saturday, April 29** – FREE shredding Event hosted by senator Carolyn Comitta located at 424 E King St from 10:00AM to 1:00PM

**Saturday, April 29** – The Malvern History center open to the public from 2:00PM to 4:00PM

**Friday, May 5** – Spring open house hosted by Senator Carolyn Comitta located t 17 E Gay St, West Chester PA from 4:00PM to 8:00PM

**Saturday May 6** – Community Yard sale hosted by Malvern Parks and Recreation from 9:00AM to 2:00PM

**Saturday May 6** – Surfin' USA Hosted by the MBPA from 12:00PM to 6:00PM

SURFIN USA spring festival is coming to Malvern on Saturday, May 6th. Presented by MBPA and Traynor Capital, this day full of big wave fun starts on King Street from 12-4pm with food trucks of many varieties, a beverage garden featuring Locust Lane beer, PA Distilling spirits, and Dressler Estate cider, FREE face-painting & balloon artists, and live music all the way down King. In Burke Park from 4-6pm, find more food & drink, kids activities, and a LIVE concert featuring Gary Roland & the Landsharks. Hang ten with us in Malvern for SURFIN USA on 5/6/23 from 12-6pm! More details at [www.malvernbusiness.com/surfin-usa](http://www.malvernbusiness.com/surfin-usa).



**Saturday, May 13** – Paoli Battlefield Paranormal Tour located at the Paoli Battlefield from 7:00PM to 1:00PM

**Saturday, May 20** – Walking Tour of the Paoli Battlefield from 1:30PM to 3:30PM

**Saturday, May 20** – Malvern Parks and Recreation Perennial Party located at Burke Park from 3:00PM to 5:00PM

**Saturday, June 3**– Picnic in the Park hosted by The Memorial Parade Committee and the Paoli Memorial Association from 6:00PM to 8:00PM

Get your picnic baskets ready for a “picnic in the park.” On Saturday, June 3, the Memorial Parade Committee in conjunction with the Paoli Memorial Association have organized an event in the park that you will surely enjoy. Bring your picnic basket, blanket and chairs to the pavilion on Monument Avenue next to the tennis courts. The Chester County Concert Band will be performing some of your favorite music from 7:00 to 8:00 pm. Before that you are welcome to bring your picnic dinner to enjoy. We also have a venue in case of poor weather at St. Patrick’s Church Parish Center. If you would like to make a contribution to this event, please forward a check payable to Paoli Memorial Association to PO Box 38, Malvern, PA 19355 and note that it is for “picnic in the park.”

**Sunday, June 4** – The 155th Annual Malvern Memorial Day Parade at 1:30PM. All events are taking place in Memorial Park on Monument Ave.