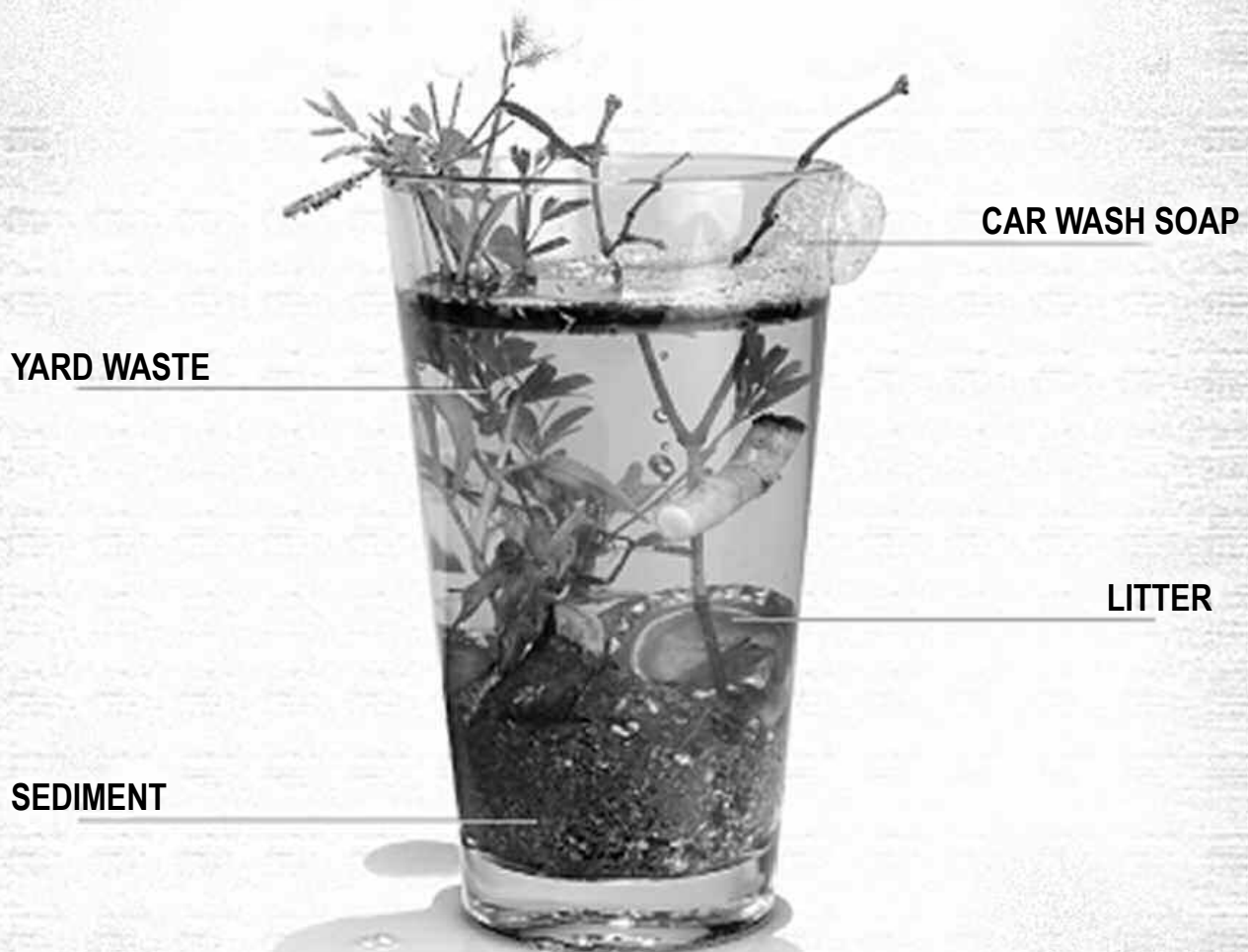


# THIRSTY?



**STORMWATER POLLUTANTS FIND THEIR WAY INTO WHERE WE FISH, WHERE WE SWIM AND WHAT WE DRINK.** Everything that goes into our storm drains—grass clippings, soap, pesticides, pet waste—makes its way straight to our streams. Stormwater pollution is our biggest source of water pollution. It all adds up.

## **DO YOUR PART TO PROMOTE CLEAN STREAMS AND SAFE DRINKING WATER**

- Pick up and properly dispose of pet waste.
- Use a commercial car wash.
- Pick up litter and compost yard waste.
- Maintain your vehicle so it does not leak oil.
- Redirect your downspouts to grassy areas or a rain barrel to lessen the amount of stormwater leaving your property and eroding nearby streambanks.

**For more information, view or download:**

- 1) Downspout disconnection instructions: [www.toronto.ca/water/protecting\\_quality/downspout\\_diy.htm](http://www.toronto.ca/water/protecting_quality/downspout_diy.htm)
- 2) "Homeowner's Guide to Stormwater Management," [www.crcwatersheds.org/resources](http://www.crcwatersheds.org/resources)

*This message is brought to you by your municipality and Chester Ridley Crum Watersheds Association, [www.crcwatersheds.org](http://www.crcwatersheds.org).*

*Graphic courtesy of North Carolina Department of Environment and Natural Resources.*